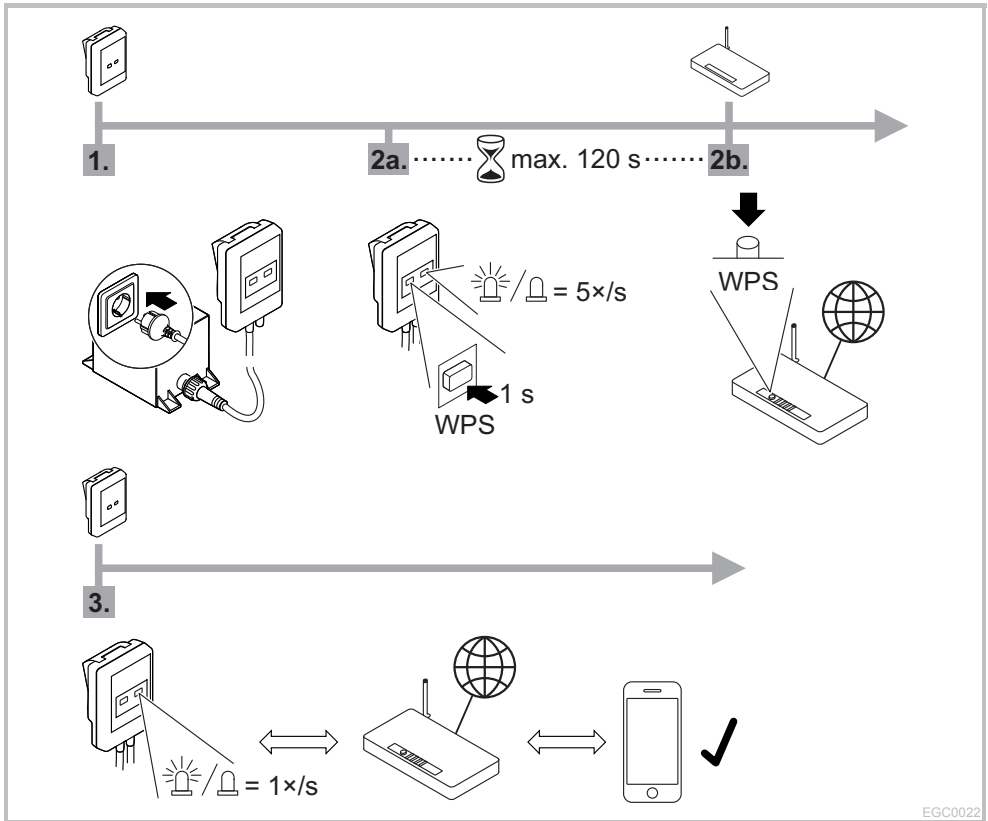
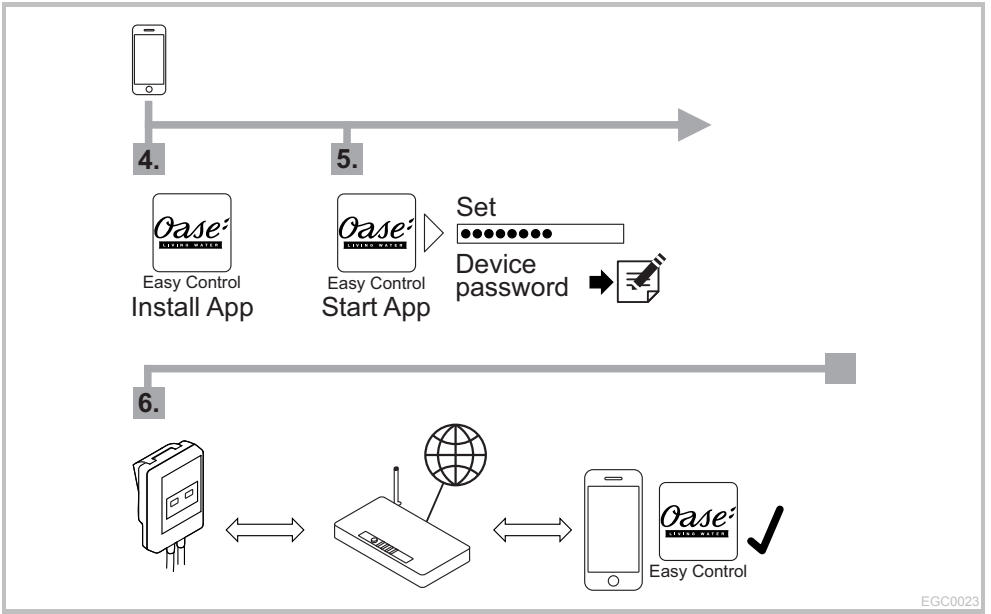


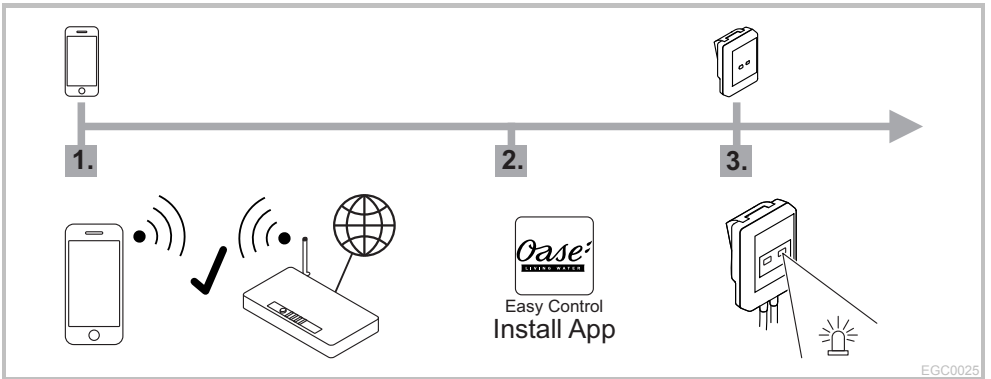
Quick Start InScenio EGC Controller

A1 – Wi-Fi connection: via WPS





A2 – Wi-Fi connection: manually



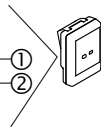


4.

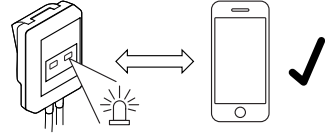


Wi-Fi settings
SSID = ①
Password = ②

SN: 1234567898765432
EGC Controller Version: V1.0
Default Firmware: V01.01
SSID: Oase EGC Controller xxxxxx
Password: oase1234



5.



6.



Easy Control
Start App

Set



Device password →

7.



Easy Control



Router/Cloud

WPS → A1 / 2b.

MANUAL CONNECTION → SSID

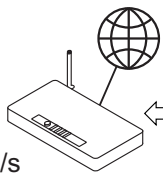
Password



8.



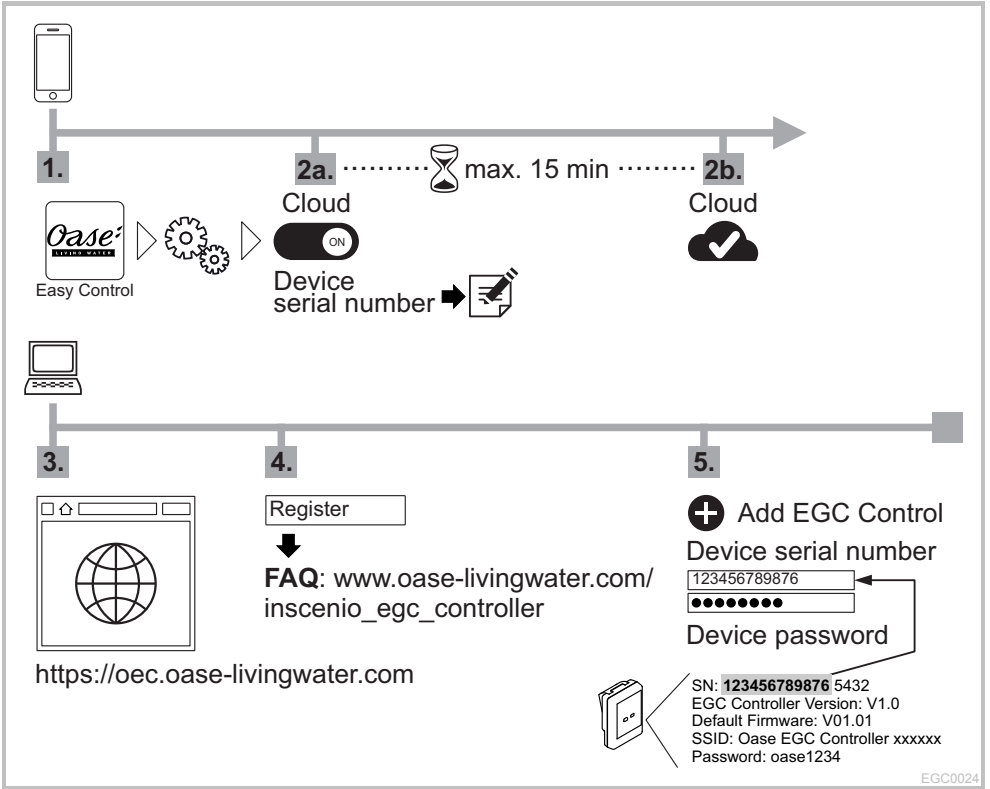
1x/s



Easy Control



B – InScenio EGC Controller Cloud: Cloud connection



Device serial number _____

Device password _____

E-Mail _____

Password _____

EGC0027